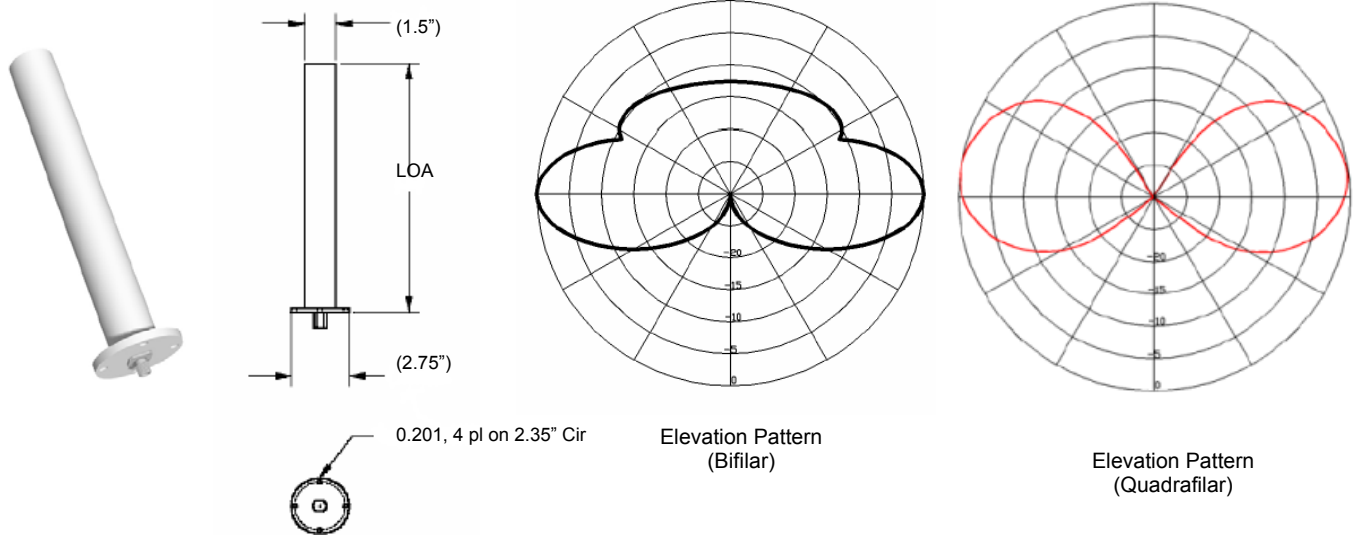


RHCP Circular Omni Antenna



RHCP Circular Omni-directional Antenna

The circular omni-directional antenna is ideal for use in airborne surveillance, tactical UAV, and ground (UGV) applications. These wide-band right hand circular polarized (RHCP) antennas are designed to provide maximum gain where it is required. The QRH version provides a maximum of energy 10° above the horizon for ground based applications such as UGV's. The BRH version provides on-axis fill and is ideal for airborne applications such as helicopters, UAV's and RPV's. When compared to linear polarization, circular polarization provides excellent rejection of reflected energy to improve link performance (cross-polarity rejection). These ground plane independent antennas are designed to be mounted directly to vehicles and can withstand harsh environments. A single antenna covers the entire designated band. A special extended length version is available for airborne applications to provide additional separation between the aircraft body and the antenna.

RHCP Circular Omni Antenna

Technical Specifications

Model	OMA-S02xRH	OMA-S06xRH	OMA-S09xRH	OMA-C12xRH	OMA-C16xRH	OMA-C19xRH
Frequency	2.0-2.5 GHz	2.0-2.5 GHz	2.0-2.5 GHz	3.0-4.0 GHz	3.0-4.0 GHz	3.0-4.0 GHz
Gain	2 dBic	6 dBic	9 dBic	2 dBic	6 dBic	9 dBic
HPBW	78°	30°	15°	78°	30°	15°
Polarity	RHCP	RHCP	RHCP	RHCP	RHCP	RHCP
Axial Ratio	<2 dB	<2 dB	<2 dB	<2 dB	<2 dB	<2 dB
VSWR	<2:1	<2:1	<2:1	<2:1	<2:1	<2:1
Power	40 Watts	40 Watts	40 Watts	40 Watts	40 Watts	40 Watts
LOA	6 in.	24 in.	48 in.	6 in.	24 in.	48 in.
Weight	2 oz.	16 oz.	32 oz.	2oz.	16 oz.	32 oz.
Connector	SMA (f)	SMA (f)	SMA (f)	SMA (f)	SMA (f)	SMA (f)
Rating	Airborne	Airborne	Airborne	Airborne	Airborne	Airborne
Construction	GRP/Alum	GRP/Alum	GRP/Alum	GRP/Alum	GRP/Alum	GRP/Alum
Finish	Polyurethane white	Polyurethane white	Polyurethane white	Polyurethane white	Polyurethane white	Polyurethane white
Mount	4 x #8 on 1.5" cir	4 x #8 on 1.5" cir	4 x #8 on 1.5" cir	4 x #8 on 1.5" cir	4 x #8 on 1.5" cir	4 x #8 on 1.5" cir
	4 x #8 on 2.35" cir	4 x #8 on 2.35" cir	4 x #8 on 2.35" cir	4 x #8 on 2.35" cir	4 x #8 on 2.35" cir	4 x #8 on 2.35" cir

Model	OMA-C22xRH	OMA-C26xRH	OMA-C29xRH
Frequency	4.0-6.0 GHz	4.0-6.0 GHz	4.0-6.0 GHz
Gain	2 dBic	6 dBic	9 dBic
HPBW	78°	30°	15°
Polarity	RHCP	RHCP	RHCP
Axial Ratio	<2 dB	<2 dB	<2 dB
VSWR	<2:1	<2:1	<2:1
Power	40 Watts	40 Watts	40 Watts
LOA	6 in.	24 in.	48 in.
Weight	2 oz.	16 oz.	32 oz.
Connector	SMA (f)	SMA (f)	SMA (f)
Rating	Airborne	Airborne	Airborne
Construction	GRP/Alum	GRP/Alum	GRP/Alum
Finish	Polyurethane white	Polyurethane white	Polyurethane white
Mount	4 x #8 on 1.5" cir	4 x #8 on 1.5" cir	4 x #8 on 1.5" cir
	4 x #8 on 2.35" cir	4 x #8 on 2.35" cir	4 x #8 on 2.35" cir

Note: Substitute "x" in model number with "B" for BRH pattern or "Q" for QRH pattern. See patterns on front of data sheet.

AIRLINX Communications, Inc.
 Box 253
 Greenville, NH 03048
 E-mail: sales@airlinx.com
 Tel: (888) 224-6814
 Fax: (603) 878-0530